

# **Preliminary Results: High School EOC Fall 2008-09**

**Presented to  
The Board of Education**

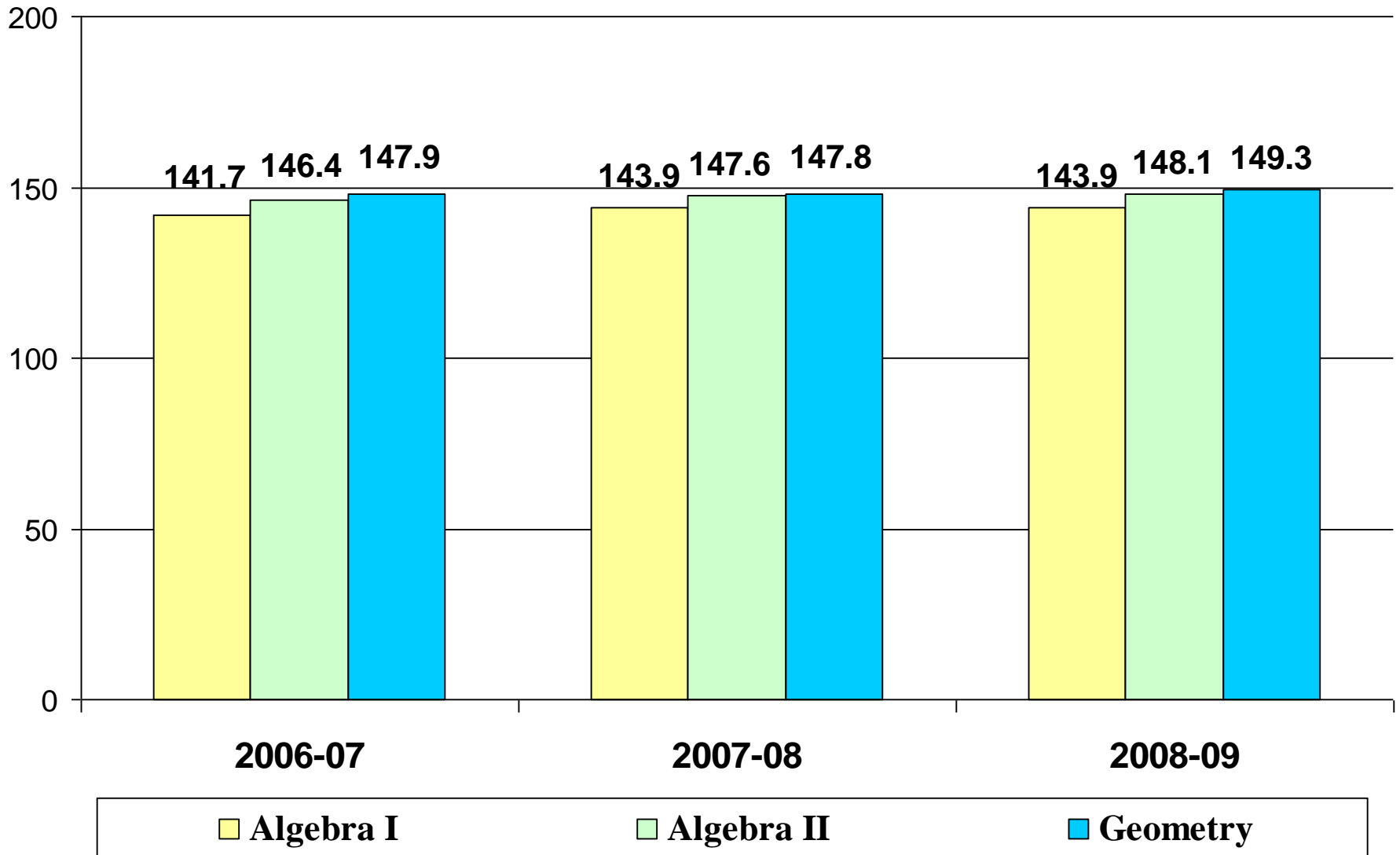
**Gongshu Zhang, Ed.D.  
Chief Accountability and Research Officer , GCSNC  
February 26, 2009**

# Brief Introduction

- 1. This is a brief report on preliminary results of the Fall semester multiple choice EOC test.**
- 2. Students on a traditional schedule meet approximately 50-60 minutes per class for one school year. Students on a block schedule meet approximately 85-95 minutes per class for one semester.**
- 3. In GCS, Northwest, Northern, Western, Grimsley, and Page are on a traditional schedule. Other high schools are on a block schedule.**
- 4. For appropriate comparison , this report includes three years (2006-07, 2007-08 and 2008-09) Fall semester data only.**
- 5. The state re-normed EOC proficient standards in 2006-07. As a result, we have utilized that year (2006-07) for comparison purposes.**

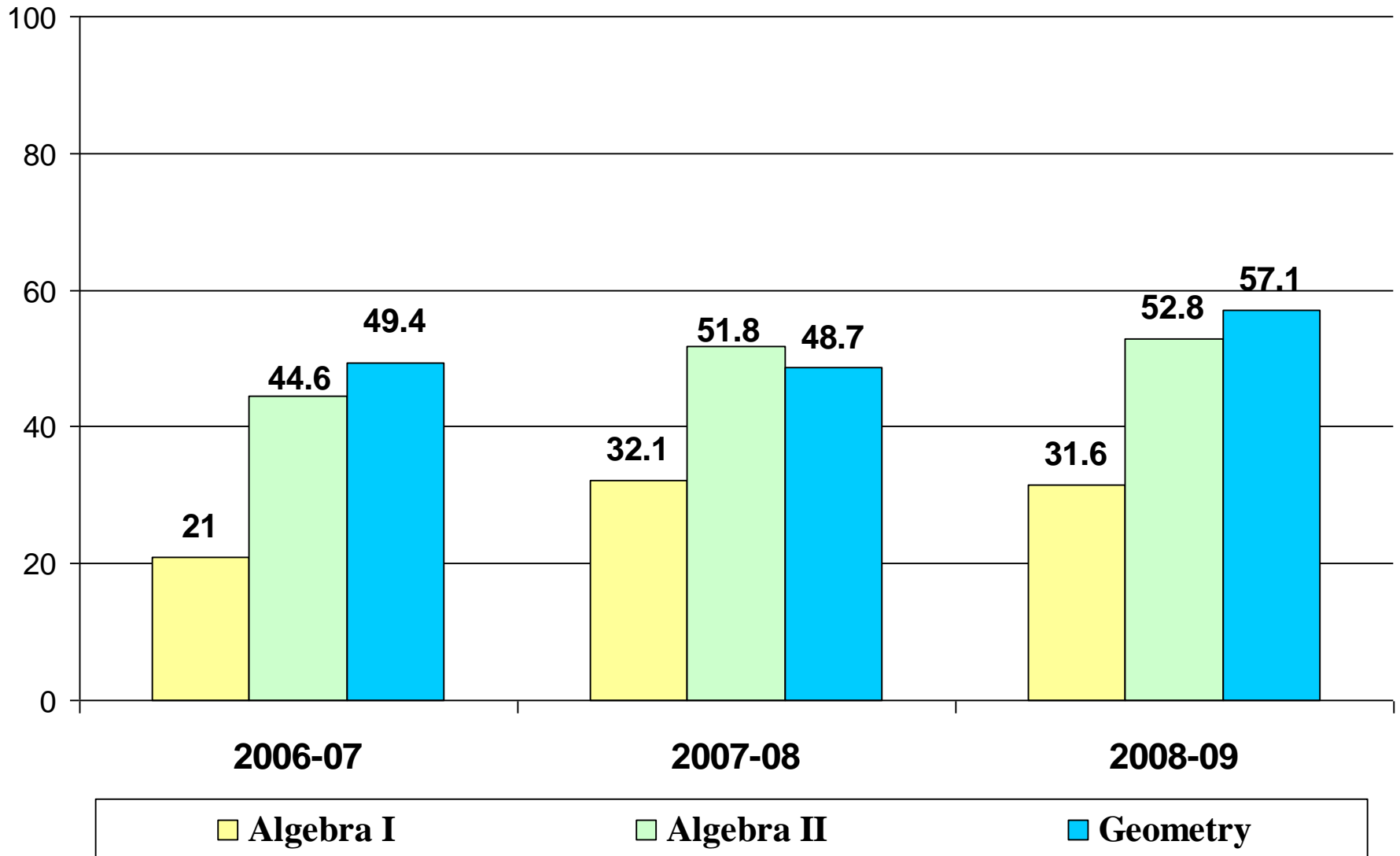
# Preliminary Results of Fall Semester EOC Multiple Choice Item Tests (I)

## Mean Score: 2006-07 to 2008-09

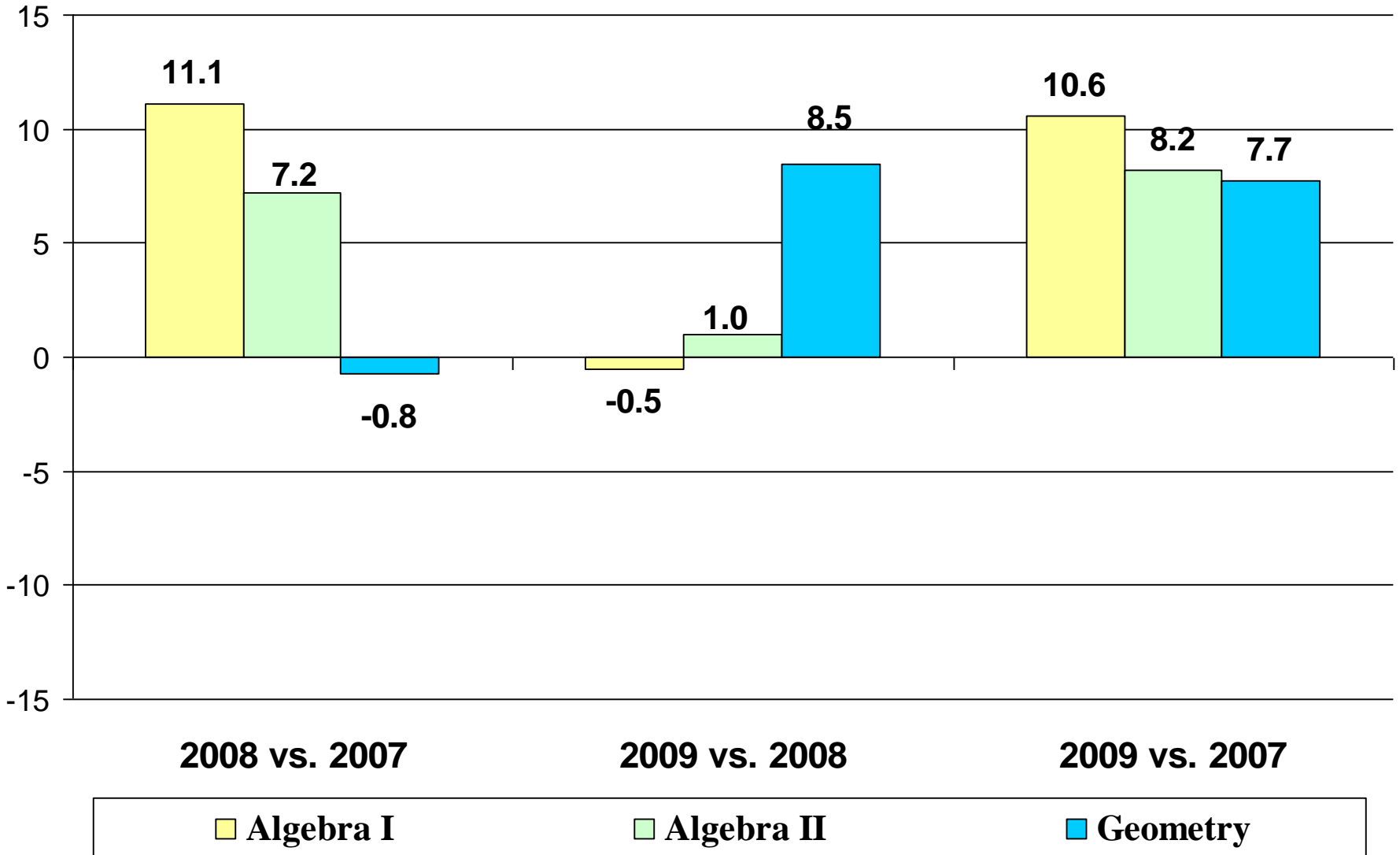


# Preliminary Results of Fall Semester EOC Multiple Choice Item Tests (I)

## Percent Proficient: 2006-07 to 2008-09

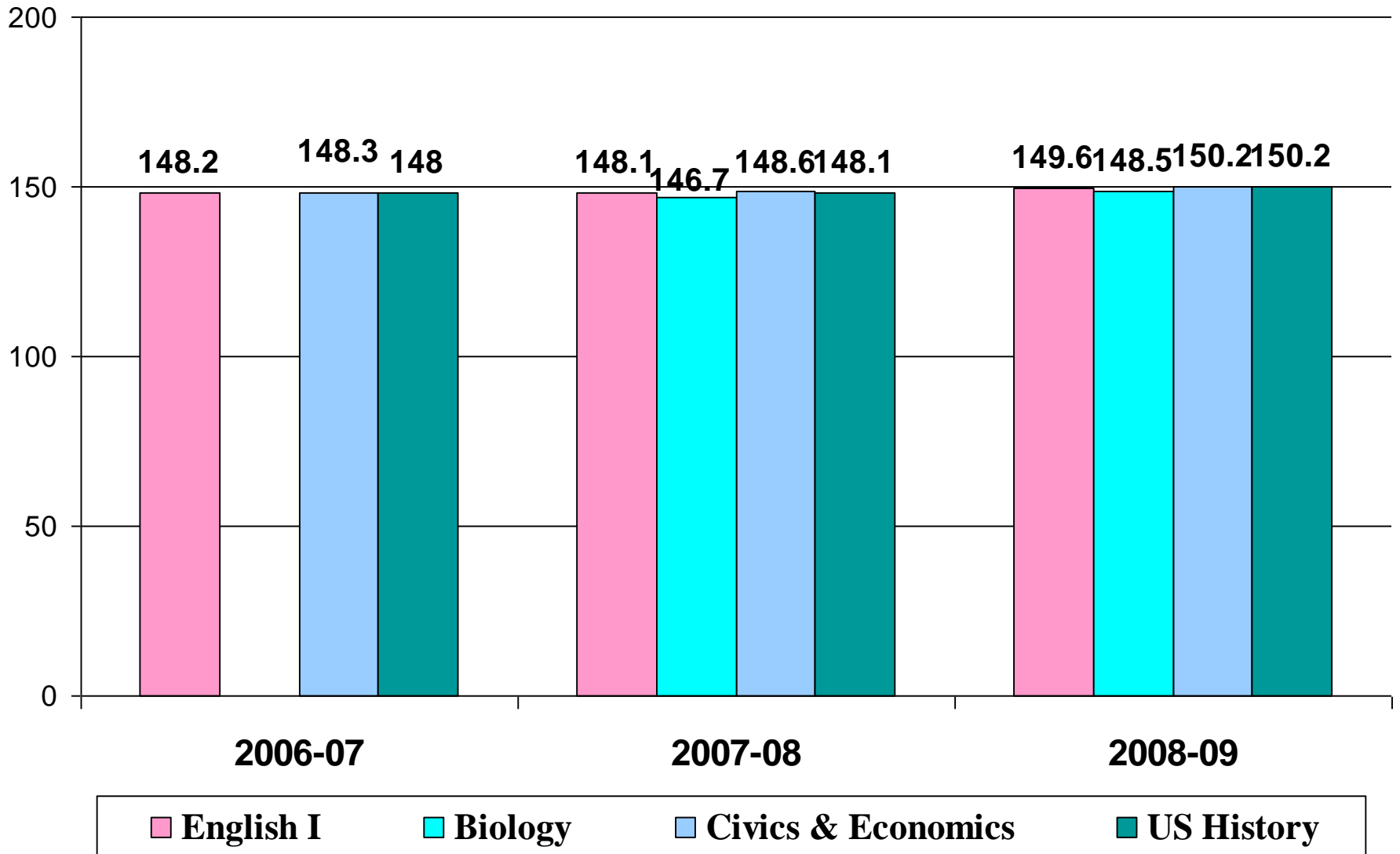


# Preliminary Results of Fall Semester EOC Multiple Choice Item Tests (I) Progress in Percent Proficient



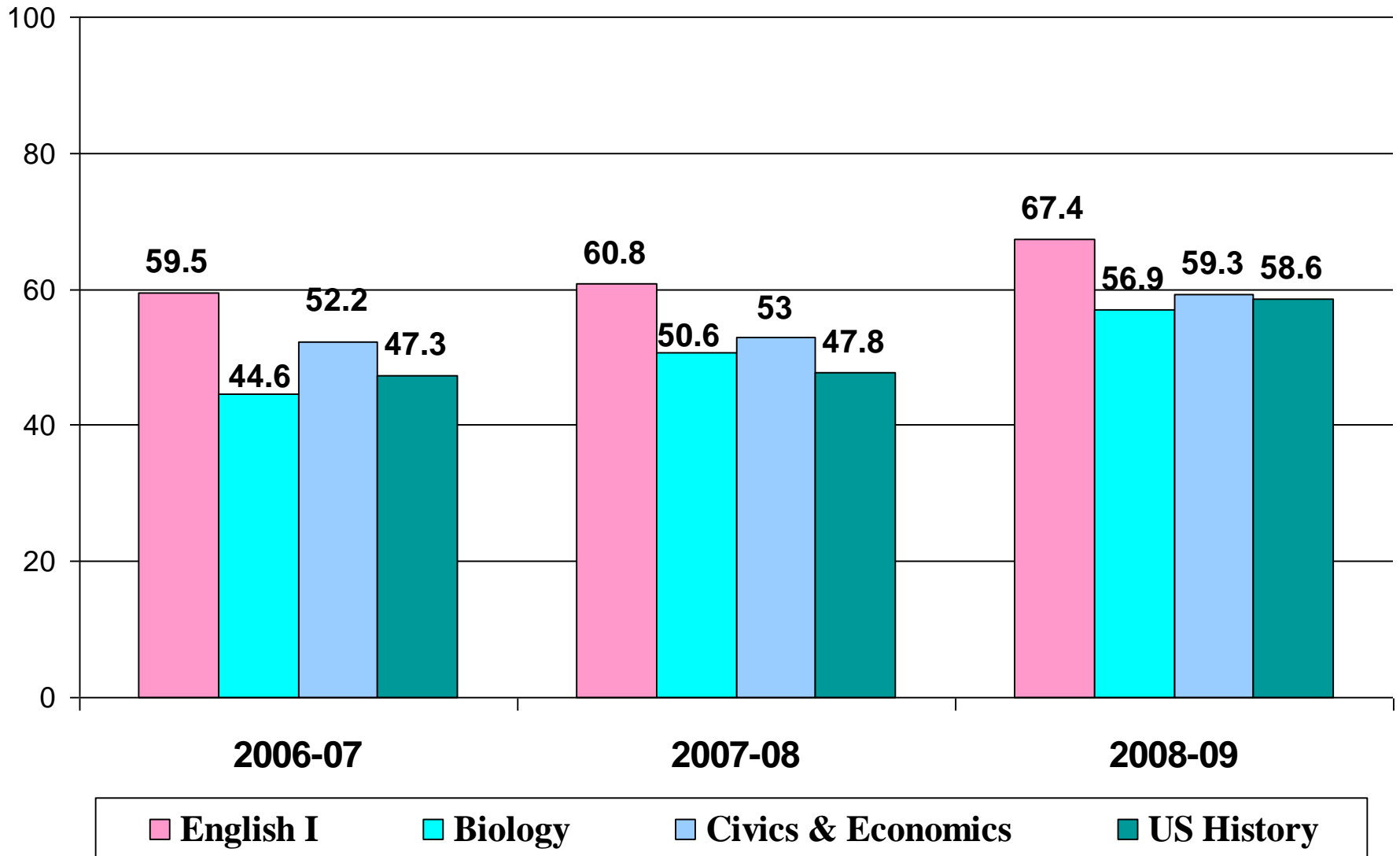
# Preliminary Results of Fall Semester EOC Multiple Choice Item Tests (II)

## Mean Score: 2006-07 to 2008-09



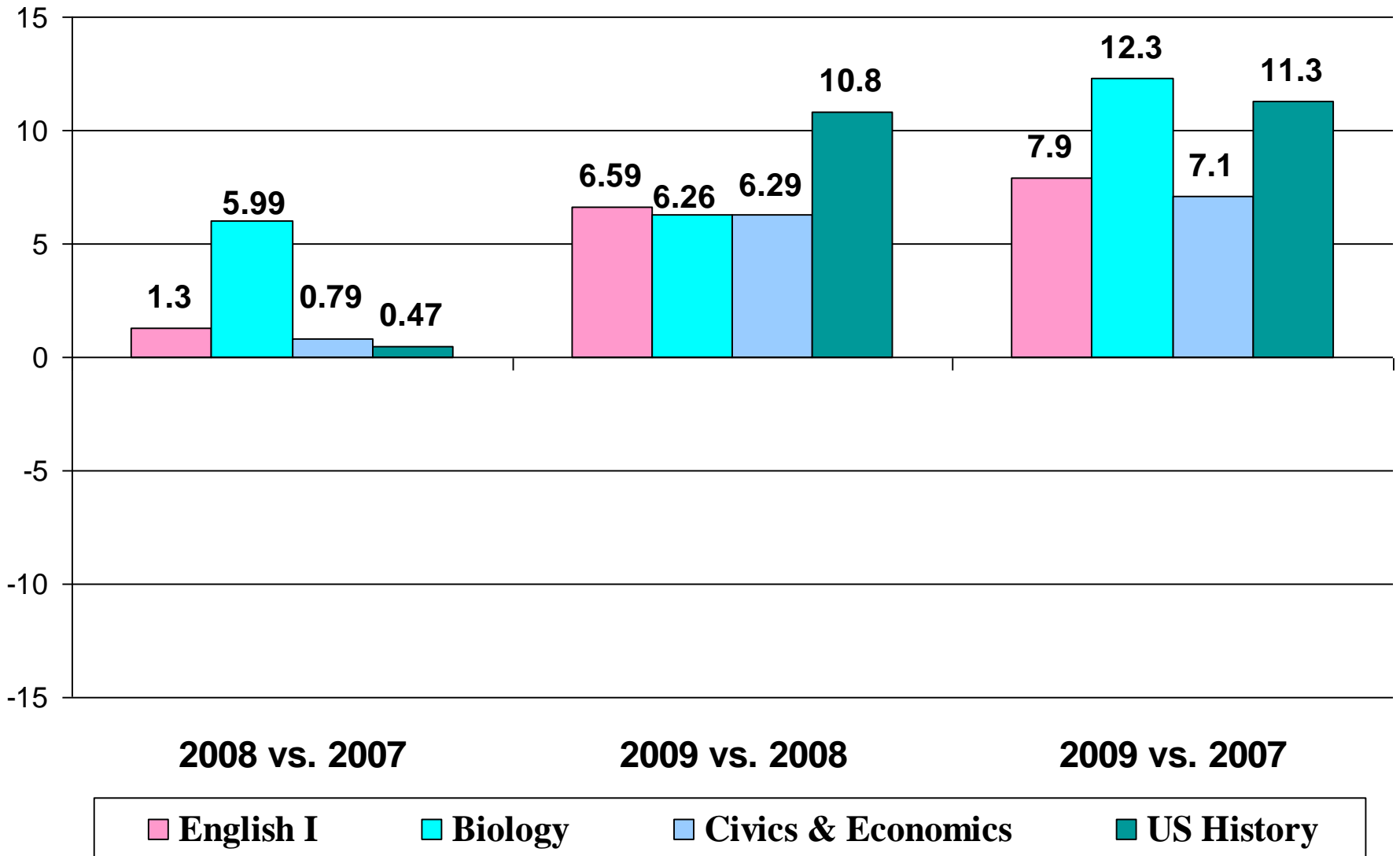
# Preliminary Results of Fall Semester EOC Multiple Choice Item Tests (II)

## Percent Proficient: 2006-07 to 2008-09



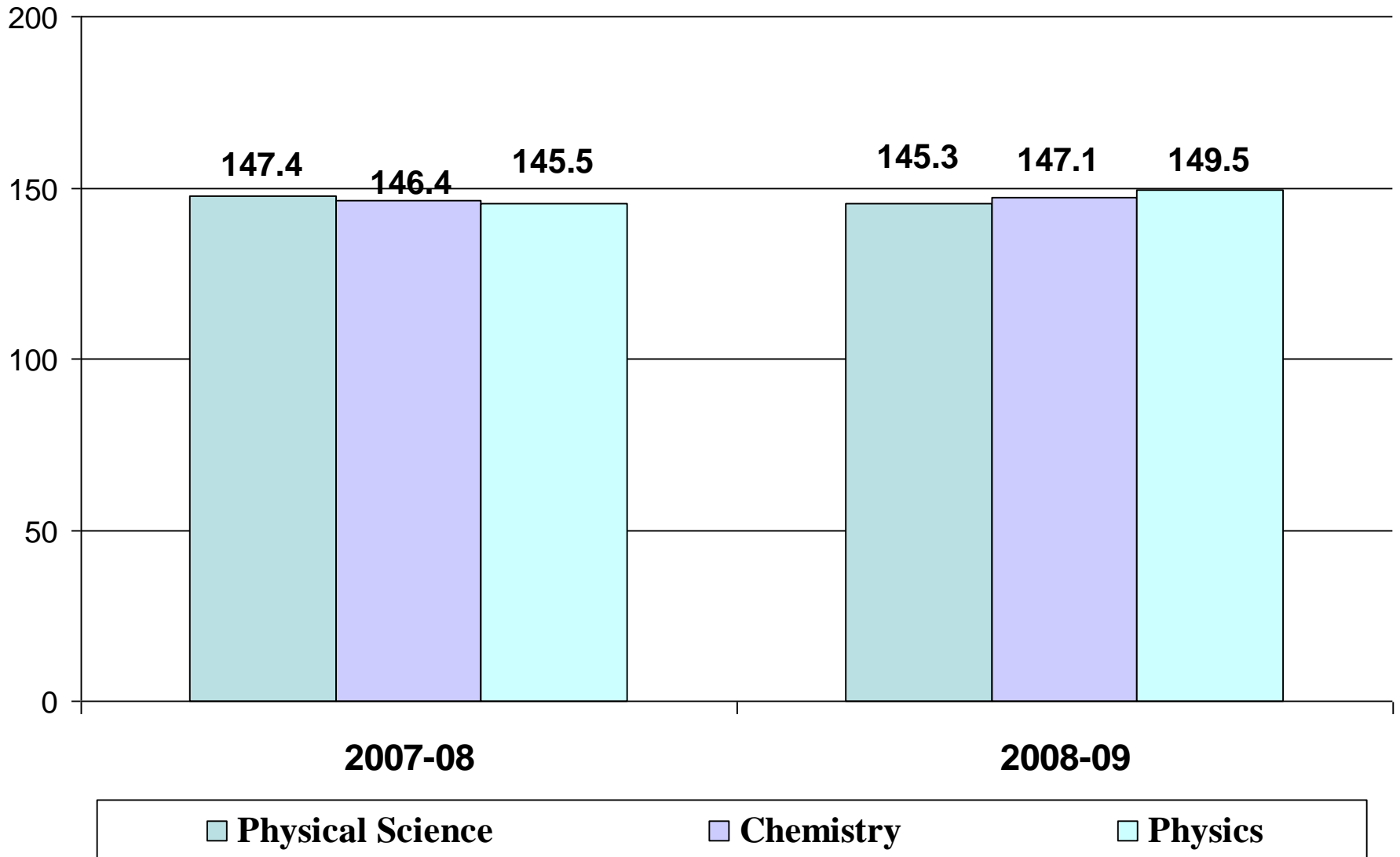
# Preliminary Results of Fall Semester EOC Multiple Choice Item Tests (II)

## Progress in Percent Proficient



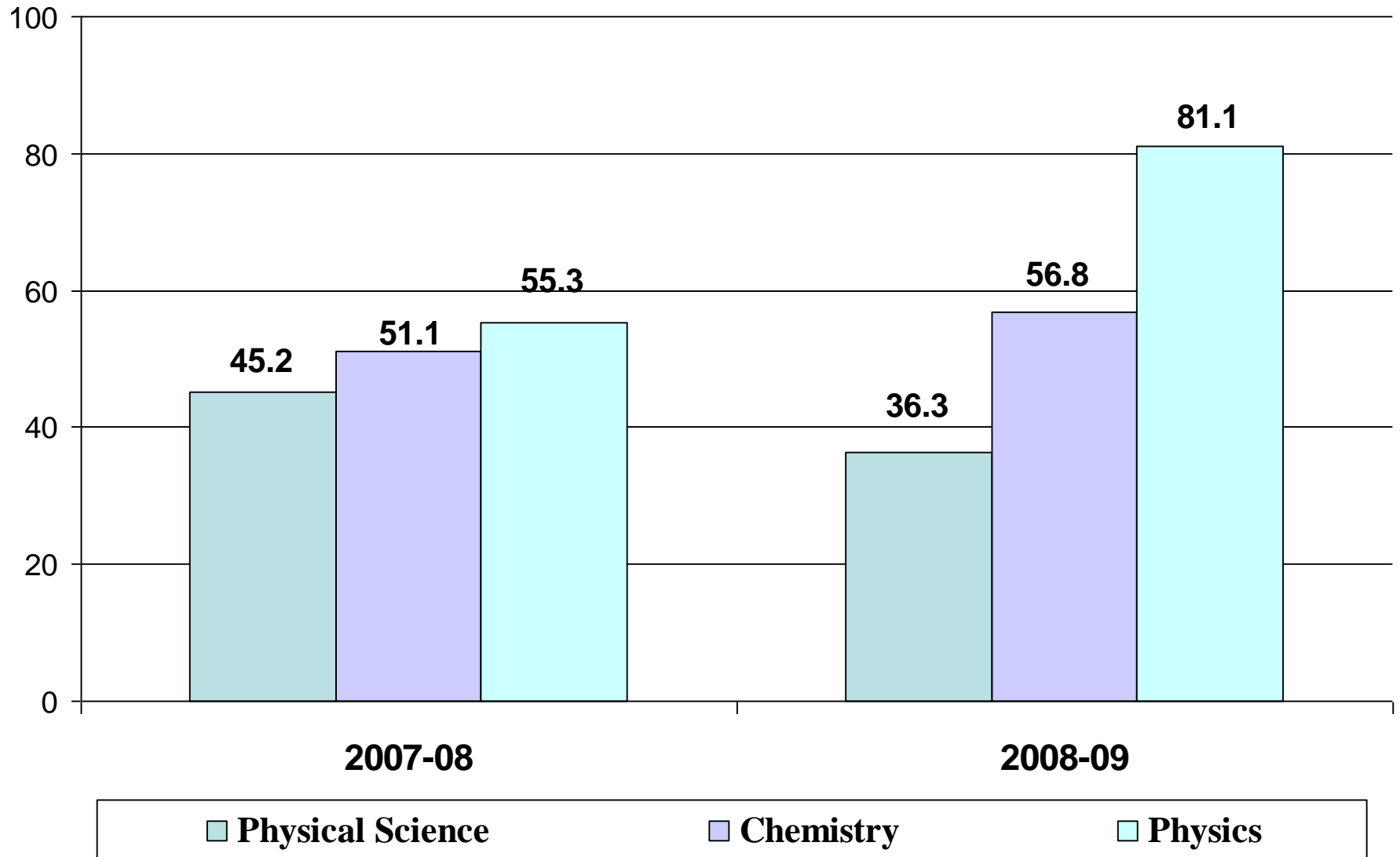
# Preliminary Results of Fall Semester EOC Multiple Choice Item Tests (III)

## Mean Score: 2006-07 to 2008-09



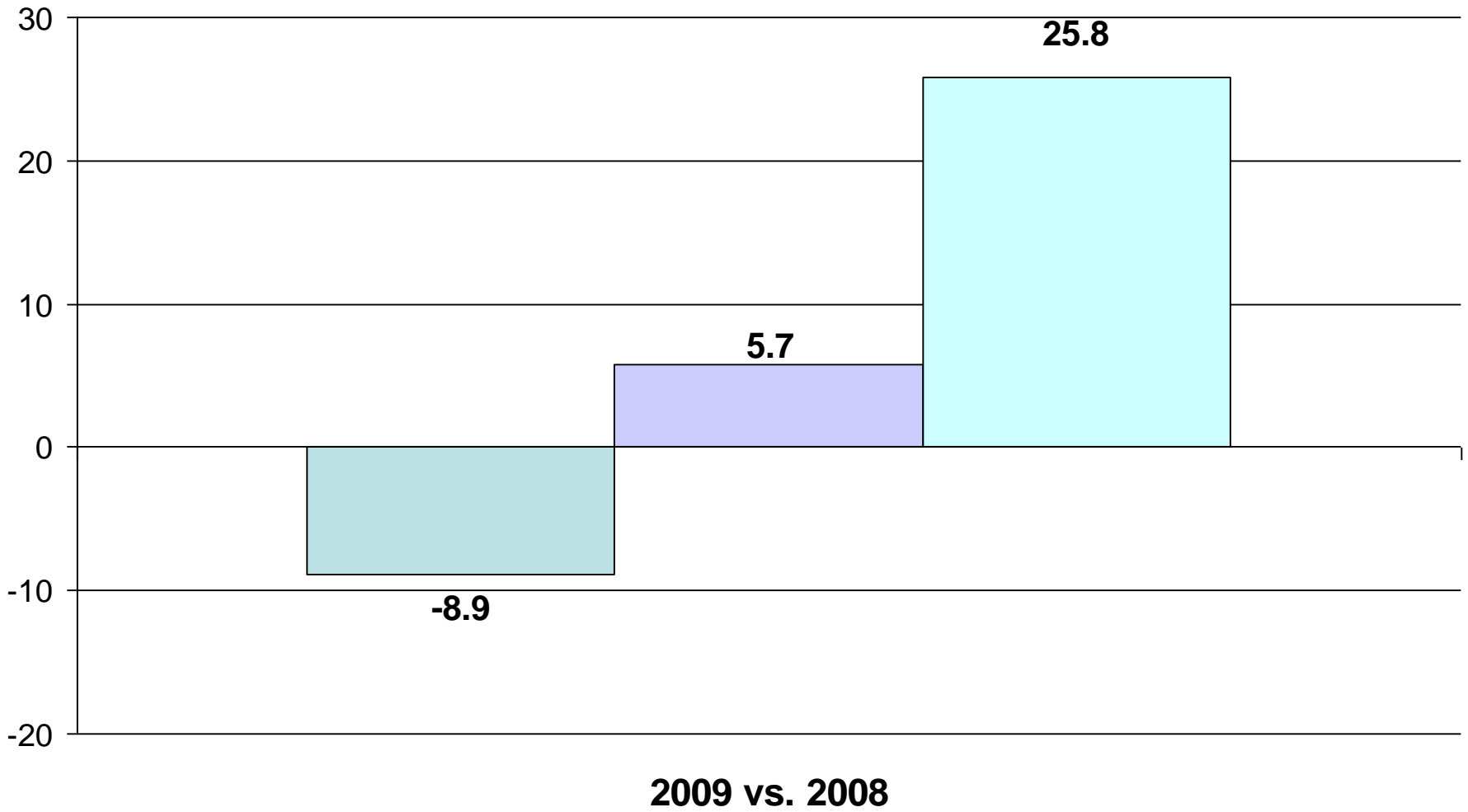
# Preliminary Results of Fall Semester EOC Multiple Choice Item Tests (III)

## Percent Proficient: 2006-07 to 2008-09



# Preliminary Results of Fall Semester EOC Multiple Choice Item Tests (III)

## Progress in Percent Proficient



**2009 vs. 2008**

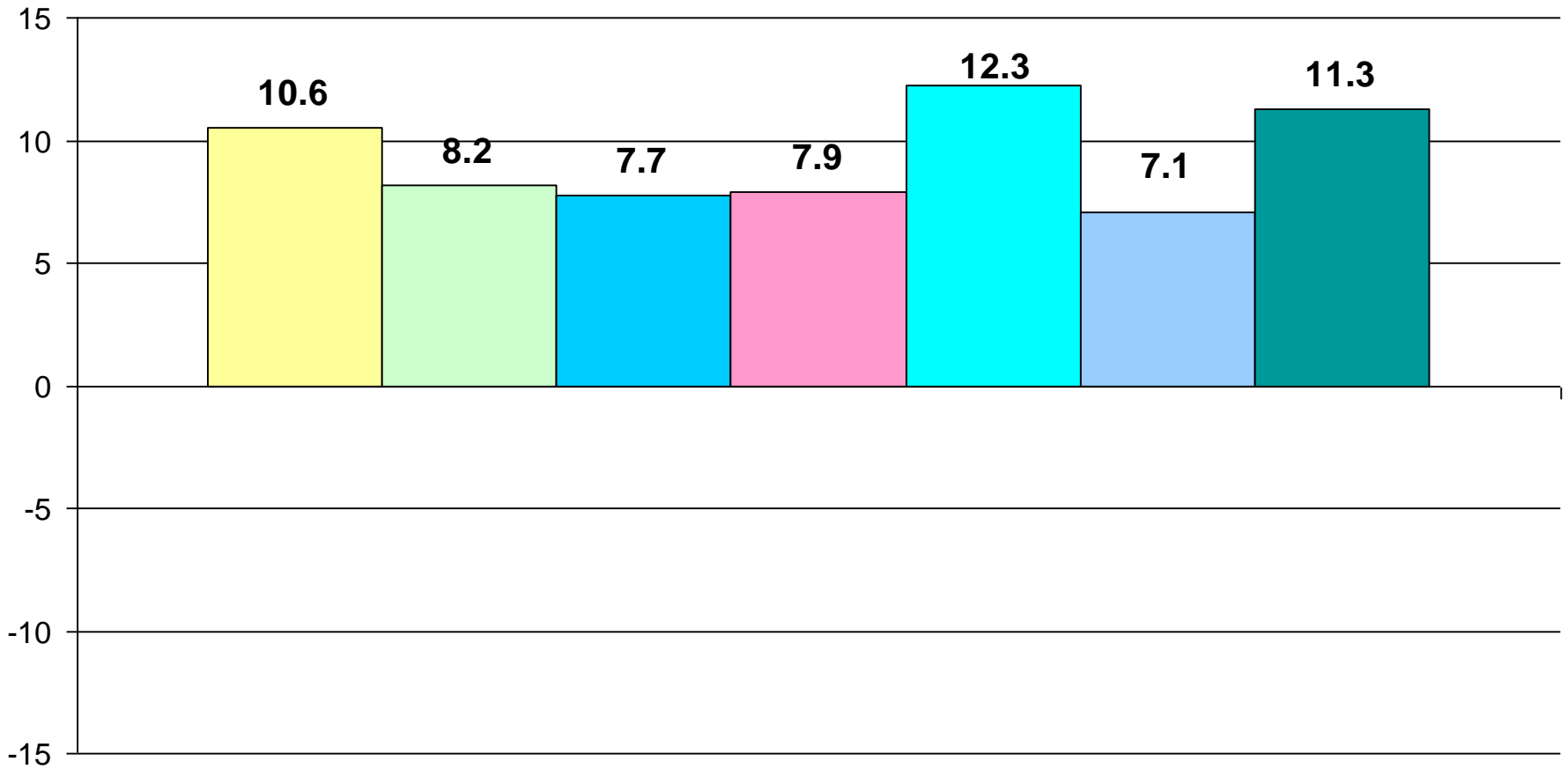
Physical Science

Chemistry

Physics

# Preliminary Results of Fall Semester EOC Multiple Choice Item Tests

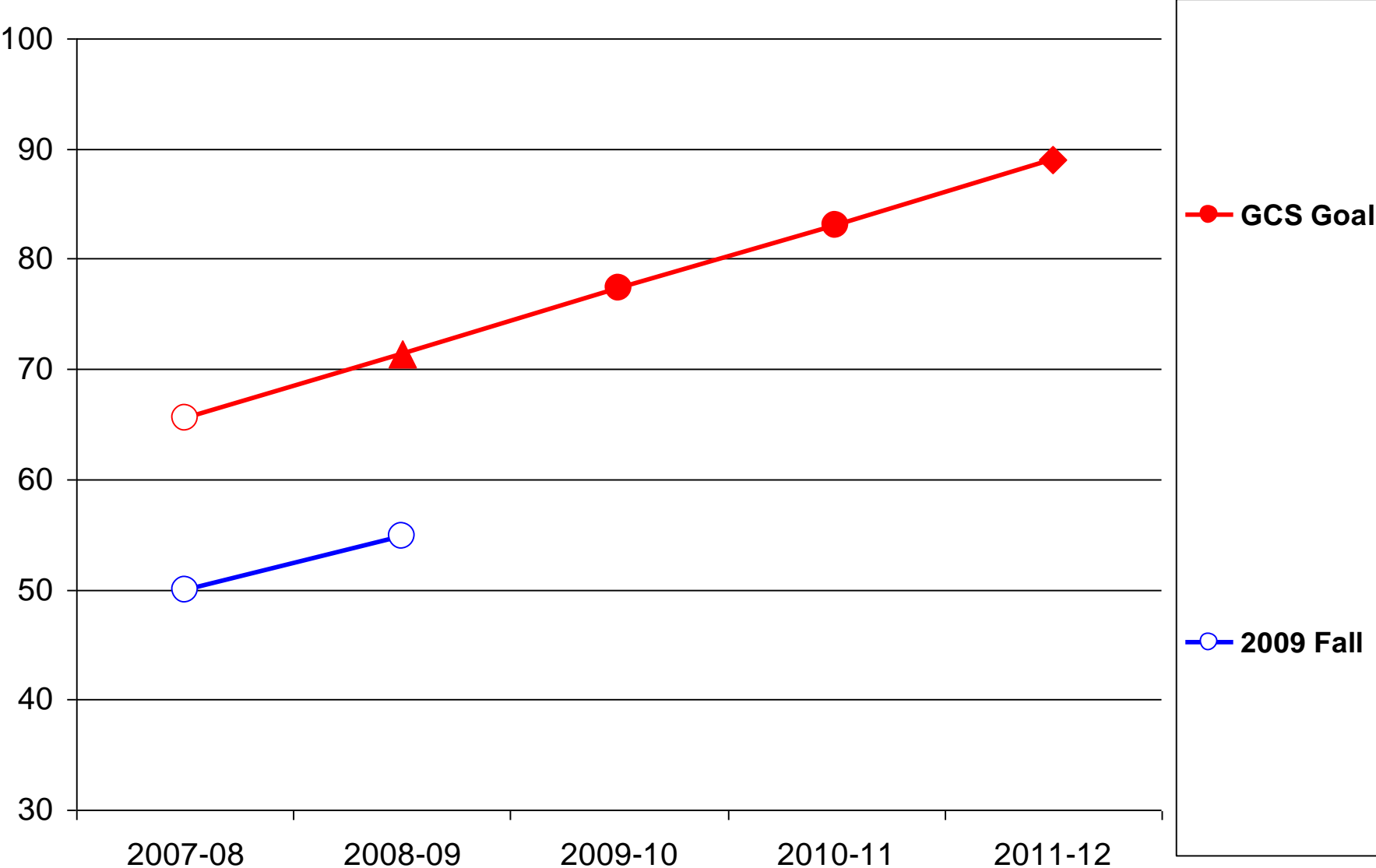
## Progress in Percent Proficient



**2009 vs. 2007**

Algebra I Algebra II Geometry English I Biology Civics & Economics US History

# Compare to 2009 EOC Target Based on GCS 2012 EOC Composite Goal



## **Brief Conclusion**

- 1. Overall, our students have made progress in almost each of the ten EOC tests as measured by mean score and percent proficient.**
- 2. When comparing 2009 to 2007 EOC test data, our students have made significant progress in all seven EOC tests (for which three years' data is available) as measured by percent proficient.**
- 3. We still have a lot of work to do in order to reach our GCS 2012 EOC Composite Goal.**

# **Attachment: EOC Performance by School**

**Preliminary EOC Algebra I Multiple Choice Item Test Result: Fall Semester of 2008-09: 2/18/2009**

Code	School Name	Number Tested			Mean Score			% Proficient			Mean Score Difference			% Proficient Difference		
		2006-07	2007-08	2008-09	2006-07	2007-08	2008-09	2006-07	2007-08	2008-09	2008-2007	2009-2008	2009-2007	2008-2007	2009-2008	2009-2007
319	Andrews H	27	86	58	138.3	142.1	144.1	7.4	27.9	27.6	3.8	2.0	<b>5.9</b>	20.5	-0.3	<b>20.2</b>
326	The M C Bennett	.	16	17	.	144.2	147.1	.	18.8	35.3	.	2.9	.	.	16.5	.
355	Dudley H	186	119	123	141.0	145.7	140.8	16.7	41.2	18.7	4.8	-4.9	<b>-1</b>	24.5	-22.5	<b>2</b>
358	Eastern H	162	117	46	141.9	143.5	142.2	22.8	34.2	19.6	1.6	-1.3	<b>.3</b>	11.3	-14.6	<b>-3.3</b>
399	M C at GTCC GBO	30	.	10	144.3	.	154.3	33.3	.	90.0	.	.	<b>10.0</b>	.	.	<b>56.7</b>
401	M C at GTCC JT	13	15	7	148.2	145.1	148.0	46.2	40.0	42.9	-3.0	2.9	<b>-2</b>	-6.2	2.9	<b>-3.3</b>
406	H P Central H	96	102	76	145.5	148.3	148.4	39.6	55.9	55.3	2.7	.1	<b>2.9</b>	16.3	-0.6	<b>15.7</b>
407	HPCH ACD	18	14	.	137.1	142.1	.	5.6	28.6	.	5.1	.	.	23	.	.
408	M C at GTCC HP	11	.	15	145.8	.	146.3	36.4	.	53.3	.	.	<b>.5</b>	.	.	<b>17</b>
483	M C at NC A&T	15	20	24	144.4	143.8	144.9	33.3	15.0	41.7	-7	1.1	<b>.5</b>	-18.3	26.7	<b>8.3</b>
484	Northeast H	105	50	86	140.5	145.4	140	11.4	44	17.4	4.8	-5.3	<b>-0.5</b>	32.6	-26.6	<b>6</b>
529	Ragsdale H	100	159	160	140	141.1	143.7	14	15.7	29.4	1	2.7	<b>3.7</b>	1.7	13.7	<b>15.4</b>
544	Smith H	201	105	56	141	142	143	19.4	22.9	21.4	1	1	<b>2</b>	3.5	-1.4	<b>2</b>
545	Smith ACD	11	32	23	140.6	144.4	151.2	0	37.5	60.9	3.8	6.8	<b>10.6</b>	37.5	23.4	<b>60.9</b>
547	Southeast H	63	.	115	141.9	.	141.6	22.2	.	22.6	.	.	<b>-0.3</b>	.	.	<b>0.4</b>
556	Southern H	77	7	.	144.4	140.6	.	29.9	14.3	.	-3.8	.	.	-15.6	.	.
562	Southwest H	84	108	104	140.1	143.7	145.8	14.3	27.8	37.5	3.6	2	<b>5.6</b>	13.5	9.7	<b>23.2</b>
589	Weaver EC	6	13	11	145.2	154.1	156.9	50	84.6	100	8.9	2.8	<b>11.7</b>	34.6	15.4	<b>50</b>

**Preliminary EOC English I Multiple Choice Item Test Result: Fall Semester of 2008-09: 2/18/2009**

Code	School Name	Number Tested			Mean Score			% Proficient			Mean Score Difference			% Proficient Difference		
		2006-07	2007-08	2008-09	2006-07	2007-08	2008-09	2006-07	2007-08	2008-09	2008-2007	2009-2008	2009-2007	2008-2007	2009-2008	2009-2007
319	Andrews H	90	91	105	148.6	142.0	146.9	67.8	31.9	58.1	-6.6	4.8	<b>-1.7</b>	-35.9	26.2	<b>-9.7</b>
326	The M C Bennett	25	25	20	148.3	151.0	151.7	72.0	96.0	80.0	2.6	.7	<b>3.3</b>	24	-16	<b>8</b>
355	Dudley H	237	268	270	147.1	148.8	149.4	58.2	69.8	70.0	1.7	.6	<b>2.3</b>	11.5	0.2	<b>11.8</b>
358	Eastern H	51	136	106	138.9	145.1	147.9	17.6	43.4	58.5	6.2	2.8	<b>9.0</b>	25.7	15.1	<b>40.8</b>
395	The E C at Guilford	27	13	.	165.3	163.8	.	100.0	100.0	.	-1.5	.	.	0	.	.
399	M C at GTCC GBO	21	24	18	148.3	156.4	153.5	61.9	100.0	77.8	8.1	-2.9	<b>5.2</b>	38.1	-22.2	<b>15.9</b>
401	M C at GTCC JT	32	16	28	153.2	150.8	151.8	84.4	68.8	82.1	-2.4	1.0	<b>-1.4</b>	-15.6	13.4	<b>-2.2</b>
406	H P Central H	132	167	196	146.7	146.8	148.7	53.8	54.5	62.2	.1	1.9	<b>2.1</b>	0.7	7.8	<b>8.5</b>
407	HPCH ACD	8	19	20	139.0	145.0	147.0	12.5	52.6	60.0	6.0	2.0	<b>8.0</b>	40.1	7.4	<b>47.5</b>
408	M C at GTCC HP	10	13	6	150.9	154.6	150.2	80.0	84.6	83.3	3.7	-4.4	<b>-.7</b>	4.6	-1.3	<b>3.3</b>
483	M C at NC A&T	.	24	23	.	145.4	148.9	.	50	69.6	.	3.5	.	.	19.6	.
484	Northeast H	172	168	31	147.1	145.7	141.4	53.5	51.2	25.8	-1.5	-4.3	<b>-5.8</b>	-2.3	-25.4	<b>-27.7</b>
529	Ragsdale H	220	156	158	150.8	150.1	149.3	70.9	67.9	62	-0.7	-0.8	<b>-1.5</b>	-3	-5.9	<b>-8.9</b>
544	Smith H	45	62	80	141	138.5	147.7	22.2	11.3	60	-2.5	9.2	<b>6.6</b>	-10.9	48.7	<b>37.8</b>
545	Smith ACD	.	48	31	.	151.7	149.4	.	81.3	71	.	-2.3	.	.	-10.3	.
547	Southeast H	28	.	169	140.9	.	150.9	14.3	.	77.5	.	.	<b>10</b>	.	.	<b>63.2</b>
556	Southern H	81	131	146	145.1	150.4	151.3	46.9	70.2	78.8	5.3	0.9	<b>6.2</b>	23.3	8.5	<b>31.9</b>
562	Southwest H	202	160	189	149	151.4	151.6	62.9	80	72	2.4	0.2	<b>2.5</b>	17.1	-8	<b>9.1</b>
589	Weaver EC	28	34	27	158.5	160.4	160.7	100	97.1	100	1.9	0.3	<b>2.2</b>	-2.9	2.9	<b>0</b>

**Preliminary EOC Biology Multiple Choice Item Test Result: Fall Semester of 2008-09: 2/18/2009**

Code	School Name	Number Tested			Mean Score			% Proficient			Mean Score Difference			% Proficient Difference		
		2006-07	2007-08	2008-09	2006-07	2007-08	2008-09	2006-07	2007-08	2008-09	2008-2007	2009-2008	2009-2007	2008-2007	2009-2008	2009-2007
319	Andrews H	85	133	112	50.8	146.0	144.9	35.3	45.1	42.0		-1.1		9.8	-3.1	<b>6.7</b>
326	The M C Bennett	12	.	26	52.2	.	145.0	33.3	.	50.0		.	.	.	.	<b>16.7</b>
355	Dudley H	173	54	172	50.7	145.5	145.7	28.9	51.9	46.5		.2		23	-5.3	<b>17.6</b>
358	Eastern H	106	108	189	57.2	149.4	146.8	67.0	66.7	51.3		-2.6		-0.3	-15.3	<b>-15.7</b>
395	The E C at Guilford	31	24	22	69.7	165.1	170.1	100.0	100.0	100.0		5.0		0	0	<b>0</b>
399	M C at GTCC GBO	24	.	12	53.0	.	157.8	29.2	.	91.7		.	.	.	.	<b>62.5</b>
401	M C at GTCC JT	22	12	9	61.7	153.2	159.4	86.4	100.0	100.0		6.3		13.6	0	<b>13.6</b>
406	H P Central H	86	189	165	56.6	147.2	149.3	61.6	51.3	58.2		2.1		-10.3	6.9	<b>-3.4</b>
407	HPCH ACD	29	14	8	47.1	139.2	151.8	17.2	.0	87.5		12.5		-17.2	87.5	<b>70.3</b>
483	M C at NC A&T	10	.	10	52.4	.	146.6	50.0	.	50.0		.	.	.	.	<b>0</b>
484	Northeast H	190	290	108	52.6	144.9	143.2	45.3	44.1	31.5		-1.6		-1.1	-12.7	<b>-13.8</b>
529	Ragsdale H	186	191	292	55.9	149.4	150.3	57.5	64.4	66.4		0.9		6.9	2	<b>8.9</b>
544	Smith H	200	160	191	49	140.8	142.8	18	25	28.3		2		7	3.3	<b>10.3</b>
545	Smith ACD	25	44	26	51.3	145.7	147.4	24	45.5	61.5		1.7		21.5	16.1	<b>37.5</b>
547	Southeast H	117	.	197	52	.	153.9	35.9	.	83.2		.	.	.	.	<b>47.4</b>
556	Southern H	107	116	177	54	147.2	147.4	44.9	49.1	52		0.2		4.3	2.8	<b>7.1</b>
562	Southwest H	151	106	141	55.5	146.5	151.6	49	48.1	72.3		5.1		-0.9	24.2	<b>23.3</b>
589	Weaver EC	26	39	47	62.4	157.2	159.5	92.3	94.9	97.9		2.3		2.6	3	<b>5.6</b>

**Preliminary EOC Civics & Economics Multiple Choice Item Test Result: Fall Semester of 2008-09: 2/18/2009**

Code	School Name	Number Tested			Mean Score			% Proficient			Mean Score Difference			% Proficient Difference		
		2006-07	2007-08	2008-09	2006-07	2007-08	2008-09	2006-07	2007-08	2008-09	2008-2007	2009-2008	2009-2007	2008-2007	2009-2008	2009-2007
319	Andrews H	111	122	120	141.4	146.2	147.0	22.5	43.4	47.5	4.7	.8	5.6	20.9	4.1	25
326	The M C Bennett	.	15	23	.	146.1	147.4	.	33.3	47.8	.	1.4	.	14.5	.	.
355	Dudley H	233	160	212	147.5	145.3	147.6	51.9	40.0	49.5	-2.1	2.3	.2	-11.9	9.5	-2.4
358	Eastern H	94	157	196	149.6	146.7	148.9	64.9	46.5	56.6	-2.9	2.2	-.8	-18.4	10.1	-8.3
395	The E C at Guilford	18	44	33	160.2	162.7	166.7	100.0	97.7	100.0	2.4	4.0	6.4	-2.3	2.3	0
399	M C at GTCC GBO	11	13	13	150.7	151.9	159.2	81.8	61.5	100.0	1.2	7.3	8.5	-20.3	38.5	18.2
401	M C at GTCC JT	32	17	27	159.2	155.9	156.5	93.8	88.2	88.9	-3.3	.6	-2.7	-5.5	0.7	-4.9
406	H P Central H	102	174	122	151.3	149.5	148.4	64.7	59.8	50.8	-1.9	-1.1	-3.0	-4.9	-9	-13.9
407	HPCH ACD	.	.	10	.	.	141.4	.	.	20.0	.	.	.	.	.	.
408	M C at GTCC HP	22	33	23	153.5	156.8	153.7	77.3	90.9	87.0	3.3	-3.0	.2	13.6	-4	9.7
483	M C at NC A&T	30	.	17	143.8	.	154.2	33.3	.	88.2	.	.	10.4	.	.	54.9
484	Northeast H	160	182	122	146.1	145.7	144.5	45.6	41.2	32.8	-0.4	-1.3	-1.6	-4.4	-8.4	-12.8
529	Ragsdale H	215	229	188	150.6	150.4	152.1	63.7	64.2	66.5	-0.2	1.7	1.5	0.5	2.3	2.8
544	Smith H	188	198	93	142.6	143.1	144.6	23.9	27.3	30.1	0.6	1.5	2.1	3.3	2.8	6.2
545	Smith ACD	18	.	19	146.4	.	156.4	38.9	.	94.7	.	.	10	.	.	55.8
547	Southeast H	190	.	195	150.4	.	152.8	56.8	.	73.8	.	.	2.4	.	.	17
556	Southern H	100	134	143	148.3	148.5	148.9	52	50	58	0.2	0.4	0.6	-2	8	6
562	Southwest H	193	200	171	149.6	152.9	153.1	57	69	69	3.2	0.2	3.5	12	0	12
589	Weaver EC	19	34	33	166.8	158.9	162.8	100	94.1	100	-8	3.9	-4.1	-5.9	5.9	0

**Preliminary EOC US History Multiple Choice Item Test Result: Fall Semester of 2008-09: 2/18/2009**

Code	School Name	Number Tested			Mean Score			% Proficient			Mean Score Difference			% Proficient Difference		
		2006-07	2007-08	2008-09	2006-07	2007-08	2008-09	2006-07	2007-08	2008-09	2008-2007	2009-2008	2009-2007	2008-2007	2009-2008	2009-2007
319	Andrews H	65	105	47	143.5	143.3	150.7	27.7	26.7	55.3	-2	7.4	<b>7.2</b>	-1	28.7	<b>27.6</b>
326	The M C Bennett	27	15	18	141.6	145.1	146.2	18.5	40.0	38.9	3.5	1.1	<b>4.6</b>	21.5	-1.1	<b>20.4</b>
355	Dudley H	127	171	122	145.8	145.6	151.5	37.8	35.1	62.3	-2	5.9	<b>5.7</b>	-2.7	27.2	<b>24.5</b>
358	Eastern H	68	95	80	151.0	149.2	150.0	61.8	54.7	61.3	-1.8	.8	<b>-1.1</b>	-7	6.5	<b>-0.5</b>
390	Greensboro M C	28	34	32	160.4	158.4	154.8	100.0	94.1	78.1	-2.1	-3.6	<b>-5.7</b>	-5.9	-16	<b>-21.9</b>
395	The E C at Guilford	.	.	6	.	.	168.0	.	.	100.0	.	.	.	.	.	.
399	M C at GTCC GBO	10	20	.	156.1	150.6	.	90.0	75.0	.	-5.6	.	.	-15	.	.
401	M C at GTCC JT	28	29	17	156.0	152.9	152.8	85.7	69.0	76.5	-3.0	-1	<b>-3.1</b>	-16.7	7.5	<b>-9.2</b>
406	H P Central H	90	76	104	146.4	145.9	146.6	38.9	42.1	39.4	-5	.6	<b>.1</b>	3.2	-2.7	<b>0.5</b>
407	HPCH ACD	34	15	10	142.0	141.7	145.8	11.8	20.0	30.0	-3	4.1	<b>3.8</b>	8.2	10	<b>18.2</b>
408	M C at GTCC HP	.	.	11	.	.	153.8	.	.	81.8	.	.	.	.	.	.
483	M C at NC A&T	11	16	22	144	146.8	152	36.4	43.8	68.2	2.8	5.2	<b>8</b>	7.4	24.4	<b>31.8</b>
484	Northeast H	85	99	134	141.8	145.6	149	23.5	39.4	52.2	3.8	3.4	<b>7.2</b>	15.9	12.8	<b>28.7</b>
529	Ragsdale H	137	178	115	150.1	152.4	152.5	60.6	64	73	2.3	0.1	<b>2.5</b>	3.5	9	<b>12.5</b>
544	Smith H	88	107	113	143.6	141.9	145.8	25	17.8	33.6	-1.7	3.9	<b>2.2</b>	-7.2	15.9	<b>8.6</b>
545	Smith ACD	27	25	22	148.3	146.2	157.8	48.1	28	90.9	-2.1	11.7	<b>9.5</b>	-20.1	62.9	<b>42.8</b>
547	Southeast H	209	.	125	149.2	.	151	51.2	.	67.2	.	.	<b>1.9</b>	.	.	<b>16</b>
556	Southern H	100	113	90	149.3	152.2	151.8	55	72.6	68.9	2.9	-0.4	<b>2.6</b>	17.6	-3.7	<b>13.9</b>
562	Southwest H	112	154	132	148.8	150.5	151.1	48.2	55.2	63.6	1.6	0.6	<b>2.2</b>	7	8.4	<b>15.4</b>
589	Weaver EC	53	.	14	156	.	158	81.1	.	100	.	.	<b>2.9</b>	.	.	<b>18.9</b>

**Preliminary EOC Algebra II Multiple Choice Item Test Result: Fall Semester of 2008-09: 2/18/2009**

Code	School Name	Number Tested			Mean Score			% Proficient			Mean Score Difference			% Proficient Difference		
		2006-07	2007-08	2008-09	2006-07	2007-08	2008-09	2006-07	2007-08	2008-09	2008-2007	2009-2008	2009-2007	2008-2007	2009-2008	2009-2007
319	Andrews H	41	55	67	144.7	147.7	148.0	34.1	49.1	59.7	3.0	.3	<b>3.3</b>	14.9	10.6	<b>25.6</b>
355	Dudley H	172	70	119	140.6	145.0	142.9	19.8	44.3	28.6	4.4	-2.1	<b>2.3</b>	24.5	-15.7	<b>8.8</b>
358	Eastern H	80	59	109	143.8	145.6	146.1	33.8	49.2	46.8	1.7	.5	<b>2.3</b>	15.4	-2.4	<b>13</b>
390	Greensboro M C	12	20	11	150.9	142.9	144.9	75.0	30.0	36.4	-8.1	2.1	<b>-6.0</b>	-45	6.4	<b>-38.6</b>
395	The E C at Guilford	30	29	32	164.0	164.3	168.5	100.0	100.0	100.0	.3	4.2	<b>4.6</b>	0	0	<b>0</b>
399	M C at GTCC GBO	13	10	15	144.0	152.9	158.1	38.5	90.0	100.0	8.9	5.2	<b>14.1</b>	51.5	10	<b>61.5</b>
401	M C at GTCC JT	17	15	14	146.2	144.4	149.1	41.2	33.3	57.1	-1.8	4.7	<b>3.0</b>	-7.8	23.8	<b>16</b>
406	H P Central H	85	84	82	157.2	152.3	157.5	89.4	77.4	96.3	-4.9	5.2	<b>.3</b>	-12	19	<b>6.9</b>
407	HPCH ACD	21	6	12	137.1	140.5	148.7	4.8	33.3	58.3	3.4	8.2	<b>11.6</b>	28.6	25	<b>53.6</b>
408	M C at GTCC HP	9	15	13	140.6	144.6	147.5	11.1	40.0	61.5	4.0	2.9	<b>7.0</b>	28.9	21.5	<b>50.4</b>
483	M C at NC A&T	11	14	21	141.8	139.4	143.4	9.1	14.3	38.1	-2.5	4.1	<b>1.6</b>	5.2	23.8	<b>29</b>
484	Northeast H	201	82	69	140.4	142.5	145.1	18.4	26.8	39.1	2.1	2.6	<b>4.7</b>	8.4	12.3	<b>20.7</b>
529	Ragsdale H	209	163	167	150	148.7	148.9	59.8	54.6	56.3	-1.3	0.2	<b>-1.1</b>	-5.2	1.7	<b>-3.5</b>
544	Smith H	107	19	112	145.3	143.3	144	43.9	31.6	36.6	-2.1	0.7	<b>-1.4</b>	-12.3	5	<b>-7.3</b>
545	Smith ACD	25		31	138.4		150.6	0		71			<b>12.3</b>			<b>71</b>
547	Southeast H	152	77	150	152.2	150.4	146.9	73.7	64.9	48	-1.8	-3.5	<b>-5.3</b>	-8.7	-16.9	<b>-25.7</b>
556	Southern H	49	87	28	148.9	145.8	143.4	61.2	42.5	32.1	-3.1	-2.5	<b>-5.6</b>	-18.7	-10.4	<b>-29.1</b>
562	Southwest H	120	189	120	145.4	147.6	148.1	40	52.9	53.3	2.3	0.4	<b>2.7</b>	12.9	0.4	<b>13.3</b>
589	Weaver EC	33		25	146.3		159.8	45.5		100			<b>13.5</b>			<b>54.5</b>

**Preliminary EOC Geometry Multiple Choice Item Test Result: Fall Semester of 2008-09: 2/18/2009**

Code	School Name	Number Tested			Mean Score			% Proficient			Mean Score Difference			% Proficient Difference		
		2006-07	2007-08	2008-09	2006-07	2007-08	2008-09	2006-07	2007-08	2008-09	2008-2007	2009-2008	<b>2009-2007</b>	2008-2007	2009-2008	<b>2009-2007</b>
319	Andrews H	106	72	34	145.0	145.3	142.4	38.7	40.3	17.6	.3	-3.0	<b>-2.7</b>	1.6	-22.6	<b>-21</b>
326	The M C Bennett	21	.	12	141.7	.	143.5	14.3	.	25.0	.	.	<b>1.8</b>	.	.	<b>10.7</b>
355	Dudley H	109	186	117	148.1	147.1	146.8	48.6	46.2	47.0	-1.0	-4	<b>-1.4</b>	-2.4	0.8	<b>-1.6</b>
358	Eastern H	.	114	125	.	145.6	145.1	.	38.6	34.4	.	-5	.	.	-4.2	.
390	Greensboro M C	.	.	8	.	.	149.9	.	.	75.0	.	.	.	.	.	.
395	The E C at Guilford	20	22	11	160.0	161.6	167.5	95.0	100.0	100.0	1.6	5.9	<b>7.5</b>	5	0	<b>5</b>
399	M C at GTCC GBO	17	25	21	145.4	152.4	152.0	41.2	72.0	85.7	7.0	-4	<b>6.6</b>	30.8	13.7	<b>44.5</b>
401	M C at GTCC JT	26	15	15	145.9	150.8	150.3	42.3	73.3	53.3	4.9	-5	<b>4.4</b>	31	-20	<b>11</b>
406	H P Central H	62	68	71	157.0	158.0	158.6	87.1	92.6	95.8	1.0	.6	<b>1.6</b>	5.6	3.1	<b>8.7</b>
407	HPCH ACD	.	12	13	.	139.3	146.8	.	8.3	38.5	.	7.6	.	.	30.1	.
408	M C at GTCC HP	21	23	17	145.3	150.4	153.4	28.6	60.9	76.5	5.1	3	<b>8.1</b>	32.3	15.6	<b>47.9</b>
483	M C at NC A&T	12	13	9	139.3	142.2	141.2	8.3	15.4	11.1	3	-1	<b>2</b>	7.1	-4.3	<b>2.8</b>
484	Northeast H	107	150	65	142.9	142.6	142.2	26.2	26	23.1	-0.3	-0.4	<b>-0.8</b>	-0.2	-2.9	<b>-3.1</b>
529	Ragsdale H	159	196	146	148.3	149	147.8	53.5	54.6	46.6	0.7	-1.2	<b>-0.5</b>	1.1	-8	<b>-6.9</b>
544	Smith H	89	143	119	148.1	145.9	146.9	50.6	37.8	48.7	-2.1	1	<b>-1.2</b>	-12.8	11	<b>-1.8</b>
545	Smith ACD	33	75	25	143.8	142.8	152.3	30.3	20	72	-1	9.5	<b>8.5</b>	-10.3	52	<b>41.7</b>
547	Southeast H	54	.	174	140.6	.	149.3	14.8	.	58.6	.	.	<b>8.7</b>	.	.	<b>43.8</b>
556	Southern H	106	50	154	150.1	151.5	153.6	56.6	74	86.4	1.4	2.1	<b>3.5</b>	17.4	12.4	<b>29.8</b>
562	Southwest H	138	107	98	152	149.8	151.7	71	64.5	66.3	-2.2	1.9	<b>-0.3</b>	-6.5	1.8	<b>-4.7</b>
589	Weaver EC	15	25	41	154	156	158	80	80	95.1	2.1	2.3	<b>4.4</b>	0	15.1	<b>15.1</b>

**Preliminary EOC Physical Science Multiple Choice Item Test Result: Fall Semester of 2008-09: 2/18/2009**

Code	School Name	Number Tested			Mean Score			% Proficient			Mean Score Difference			% Proficient Difference		
		2006-07	2007-08	2008-09	2006-07	2007-08	2008-09	2006-07	2007-08	2008-09	2008-2007	2009-2008	2009-2007	2008-2007	2009-2008	2009-2007
319	Andrews H	.	44	71	.	146.0	144.0	.	38.6	35.2	.	-2.4	.	.	.	-3.4
326	The M C Bennett	.	29	.	.	142.0	.	.	24.1	.	.	.	.	.	.	.
355	Dudley H	.	194	221	.	145.0	145.0	.	35.1	29.9	.	.0	.	.	.	-5.2
358	Eastern H	.	65	81	.	146.0	144.0	.	40.0	27.2	.	-2.3	.	.	.	-12.8
399	M C at GTCC GBO	.	18	35	.	155.0	152.0	.	77.8	68.6	.	-3.7	.	.	.	-9.2
401	M C at GTCC JT	.	26	13	.	156.0	148.0	.	88.5	46.2	.	-8.3	.	.	.	-42.3
406	H P Central H	.	123	72	.	152.0	145.0	.	68.3	37.5	.	-7.1	.	.	.	-30.8
407	HPCH ACD	.	.	15	.	.	150.0	.	.	66.7	.	.	.	.	.	.
408	M C at GTCC HP	.	17	.	.	152.0	.	.	82.4	.	.	.	.	.	.	.
483	M C at NC A&T	.	.	7	.	.	156.0	.	.	100.0	.	.	.	.	.	.
484	Northeast H	.	94	86	.	146	146	.	38.3	41.9	.	0	.	.	.	3.6
529	Ragsdale H	.	192	64	.	148	146	.	46.4	46.9	.	-1.2	.	.	.	0.5
544	Smith H	.	55	110	.	142	143	.	16.4	21.8	.	0.3	.	.	.	5.5
545	Smith ACD	.	20	.	.	142	.	.	10	.	.	.	.	.	.	.
547	Southeast H	.	68	112	.	156	147	.	85.3	46.4	.	-8.8	.	.	.	-38.9
556	Southern H	.	46	54	.	146	145	.	34.8	31.5	.	-0.6	.	.	.	-3.3
562	Southwest H	.	163	91	.	146	145	.	38	31.9	.	-1.1	.	.	.	-6.2

**Preliminary EOC Chemistry Multiple Choice Item Test Result: Fall Semester of 2008-09: 2/18/2009**

Code	School Name	Number Tested			Mean Score			% Proficient			Mean Score Difference			% Proficient Difference		
		2006-07	2007-08	2008-09	2006-07	2007-08	2008-09	2006-07	2007-08	2008-09	2008-2007	2009-2008	2009-2007	2008-2007	2009-2008	2009-2007
319	Andrews H	.	45	46	.	140.0	143.0	.	20.0	37.0	.	2.9	.	.	17	.
355	Dudley H	.	12	.	.	138.0	.	.	16.7	.	.	.	.	.	.	.
358	Eastern H	.	52	44	.	146.0	141.0	.	57.7	29.5	.	-5.4	.	.	-28.1	.
390	Greensboro M C	.	.	25	.	.	156.0	.	.	88.0	.	.	.	.	.	.
395	The E C at Guilford	.	9	.	.	153.0	.	.	100.0	.	.	.	.	.	.	.
401	M C at GTCC JT	.	.	14	.	.	148.0	.	.	64.3	.	.	.	.	.	.
406	H P Central H	.	42	35	.	155.0	154.0	.	92.9	91.4	.	-.6	.	.	-1.4	.
408	M C at GTCC HP	.	.	15	.	.	147.0	.	.	66.7	.	.	.	.	.	.
484	Northeast H	.	70	76	.	142.0	145.0	.	37.1	48.7	.	2.4	.	.	11.5	.
529	Ragsdale H	.	113	84	.	149.0	147.0	.	56.6	53.6	.	-1.6	.	.	-3.1	.
544	Smith H	.	55	18	.	142	139	.	23.6	16.7	.	-3.1	.	.	-7	.
545	Smith ACD	.	26	13	.	137	144	.	19.2	30.8	.	6.7	.	.	11.5	.
547	Southeast H	.	54	66	.	149	149	.	59.3	71.2	.	0.3	.	.	12	.
556	Southern H	.	58	48	.	143	145	.	36.2	41.7	.	1.4	.	.	5.5	.
562	Southwest H	.	58	79	.	152	148	.	84.5	65.8	.	-4.2	.	.	-18.7	.
589	Weaver EC	.	28	10	.	151	148	.	67.9	60	.	-3	.	.	-7.9	.

**Preliminary EOC Physics Multiple Choice Item Test Result: Fall Semester of 2008-09: 2/18/2009**

Code	School Name	Number Tested			Mean Score			% Proficient			Mean Score Difference			% Proficient Difference		
		2006-07	2007-08	2008-09	2006-07	2007-08	2008-09	2006-07	2007-08	2008-09	2008-2007	2009-2008	2009-2007	2008-2007	2009-2008	2009-2007
319	Andrews H	.	16	.	.	138.6	.	.	25.0	.	.	.	.	.	.	.
390	Greensboro M C	.	14	.	.	146.4	.	.	57.1	.	.	.	.	.	.	.
406	H P Central H	.	.	29	.	.	154.6	.	.	93.1	.	.	.	.	.	.
484	Northeast H	.	10	.	.	148.4	.	.	70.0	.	.	.	.	.	.	.
529	Ragsdale H	.	.	23	.	.	148.1	.	.	91.3	.	.	.	.	.	.
544	Smith H	.	6	.	.	138.5	.	.	16.7	.	.	.	.	.	.	.
547	Southeast H	.	29	22	.	148.4	144.1	.	72.4	54.5	.	-4.3	.	.	-17.9	.