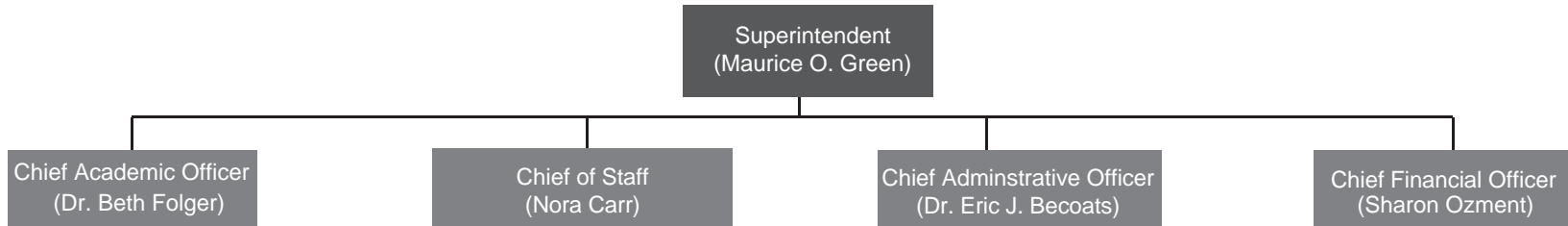




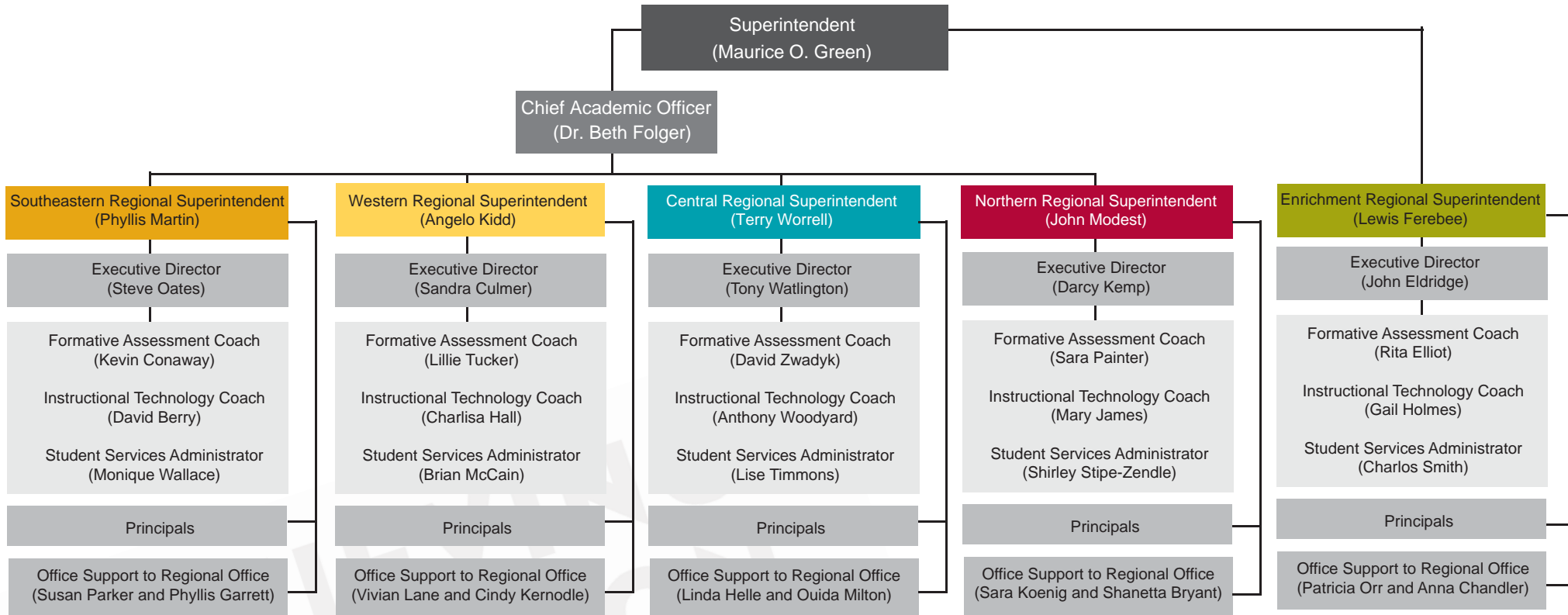
## 2009-10 Organization Chart



ACHIEVING  
EDUCATION  
EXCELLENCE



## 2009-10 Regional Organization Chart

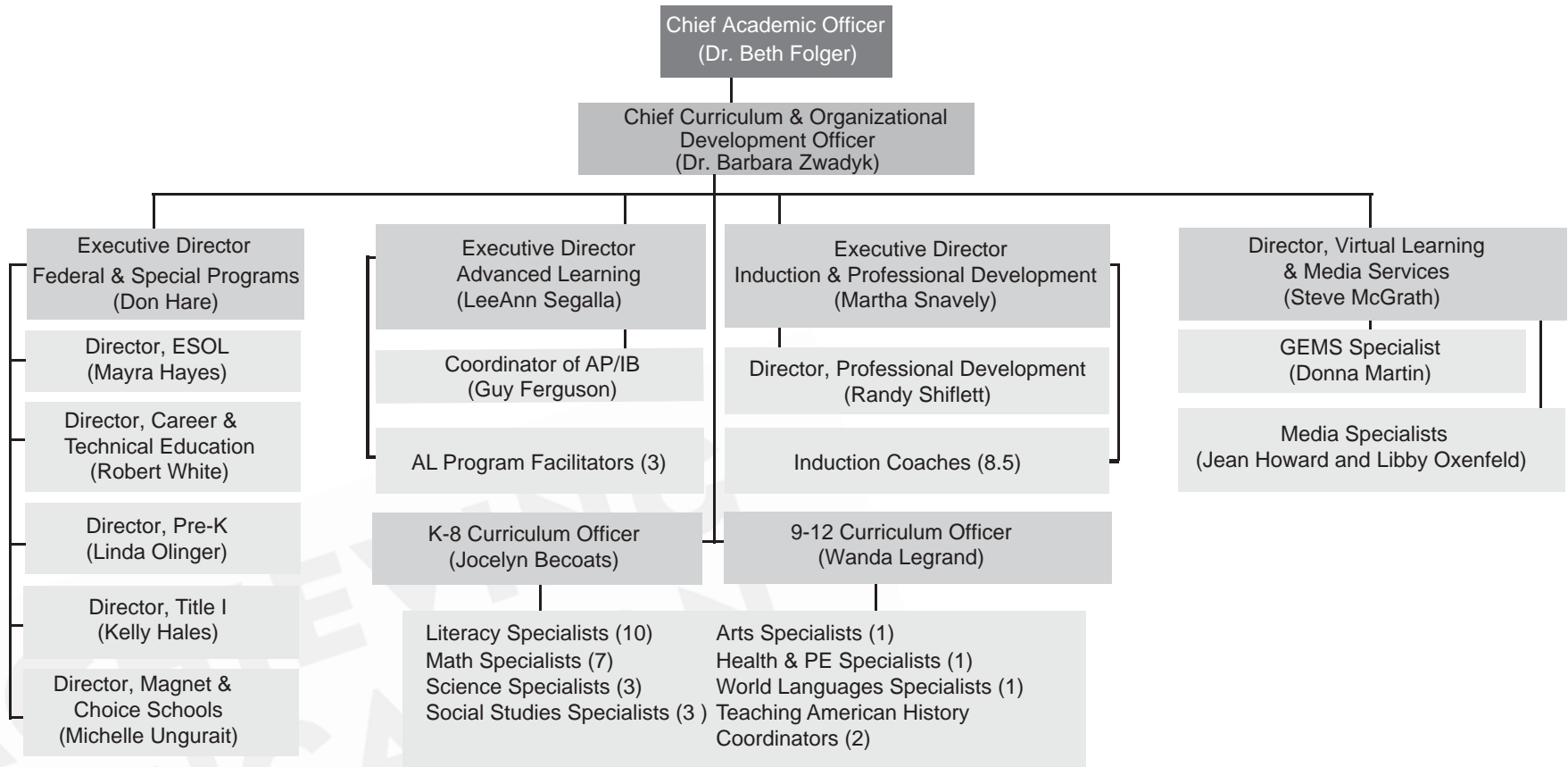


\* Central office departments will appoint liaisons to support each region with specific areas of expertise including communications, transportation, human resources, finance, etc.





## 2009-10 Organization Chart

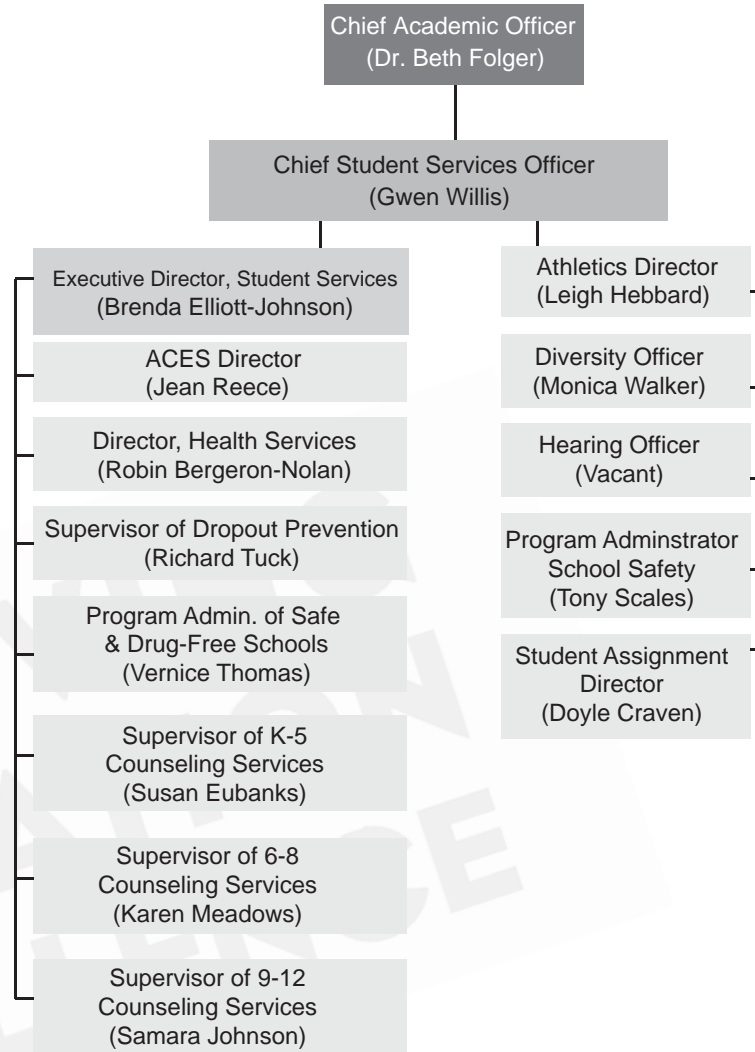


ACHIEVING  
EDUCATIONAL  
EXCELLENCE





### 2009-10 Organization Chart

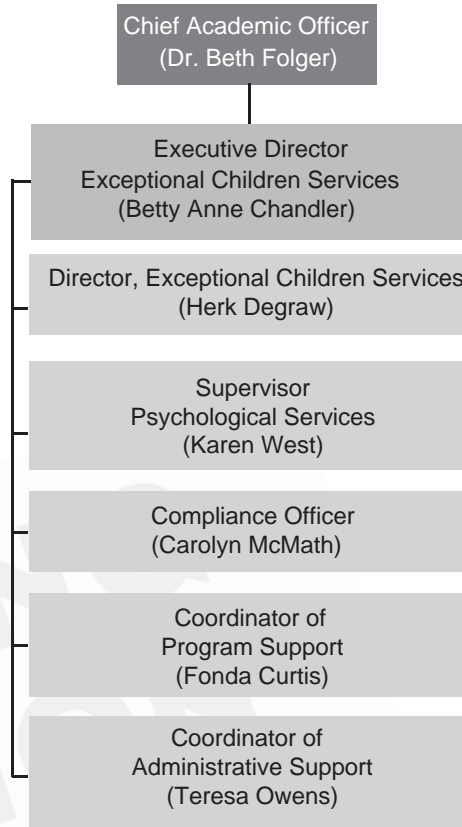


ACHIEVING  
EDUCATIONAL  
EXCELLENCE





## 2009-10 Organization Chart

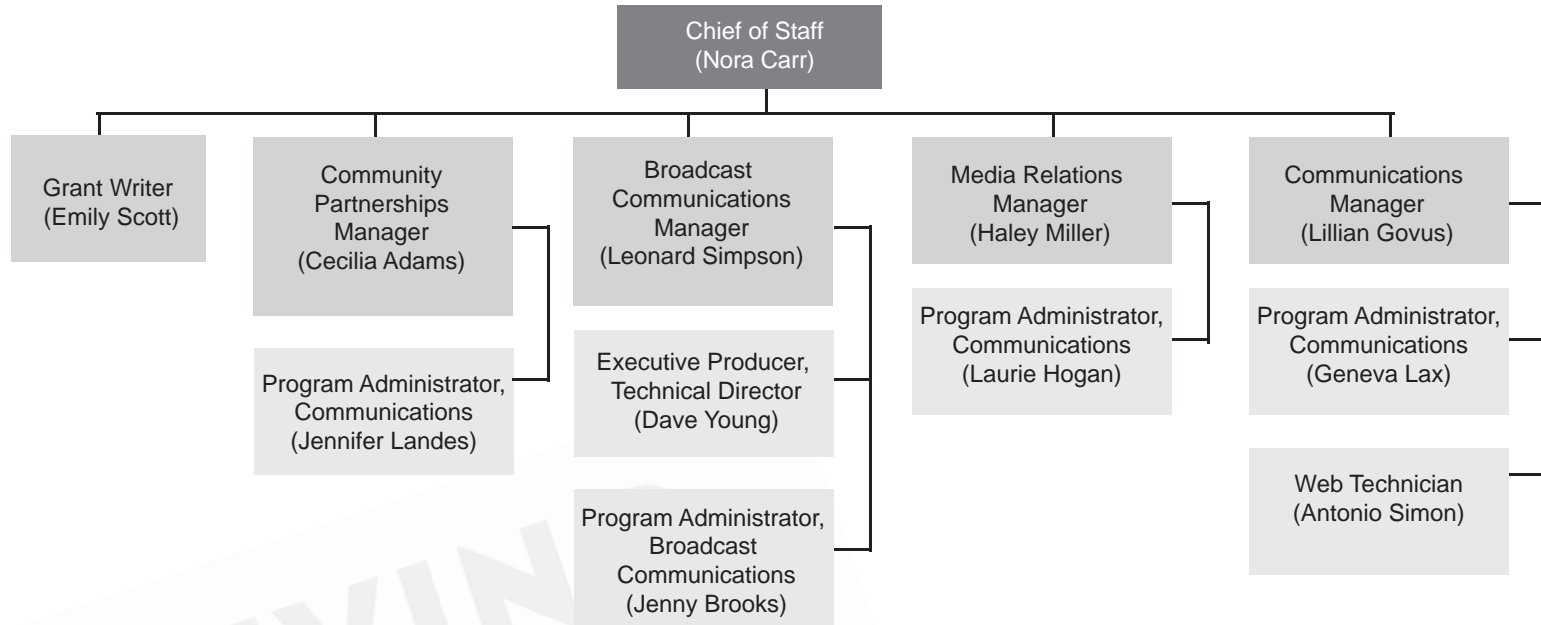


ACHIEVING  
EDUCATIONAL  
EXCELLENCE





### 2009-10 Organization Chart

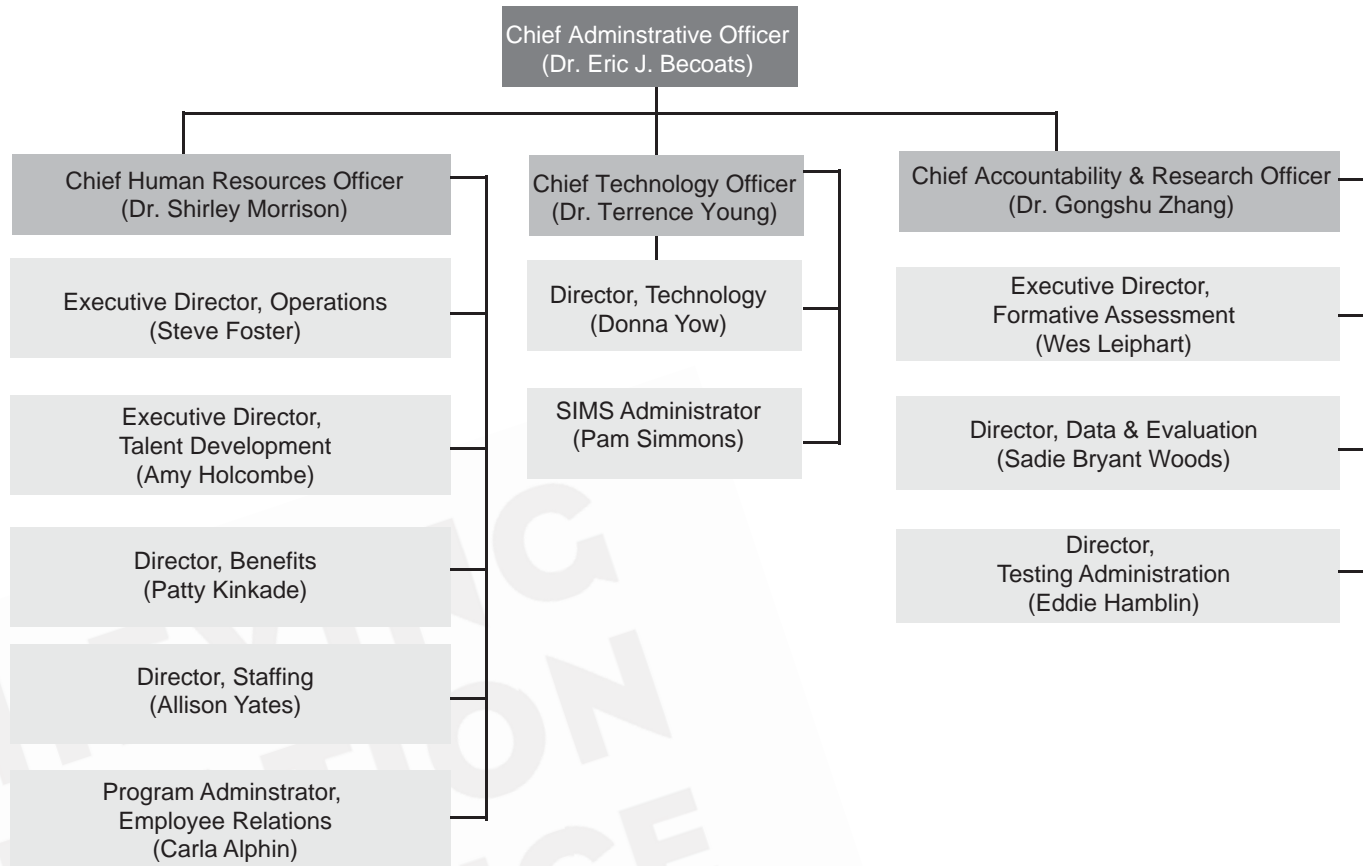


ACHIEVING  
EDUCATION  
EXCELLENCE





## 2009-10 Organization Chart



ACHIEVING  
EDUCATIONAL  
EXCELLENCE





2009-10 Organization Chart

